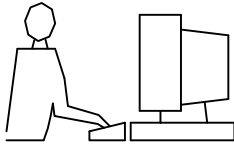


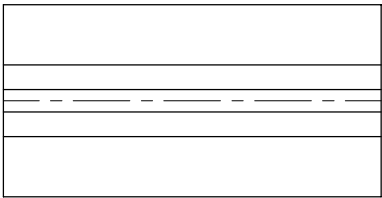
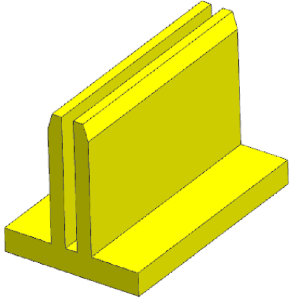
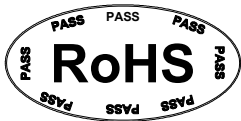
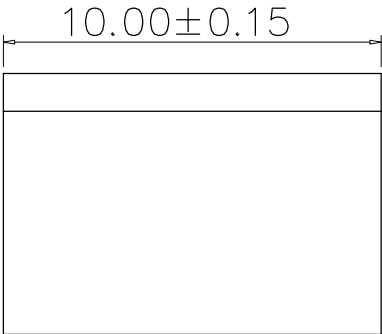
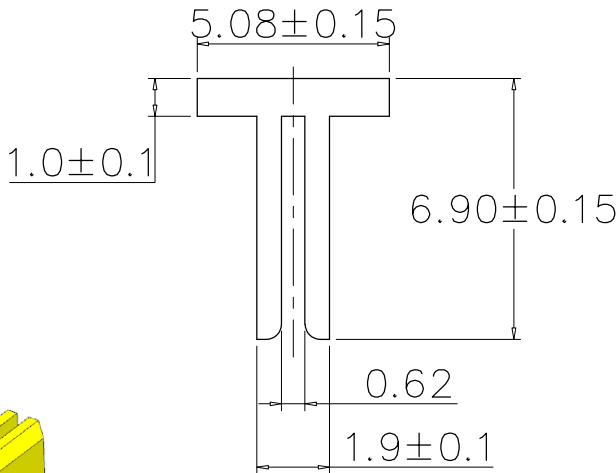
THIS IS A C.A.D. GENERATED DRAWING  
DO NOT MAKE MANUAL REVISIONS TO WORKSHOP.



\*UNLESS SPECIFIED  
TOLERANCES UNDECLARED IS:  $\pm 0.20\text{MM}$


Change Record

Date Of Initial Confirmation

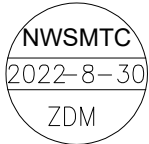
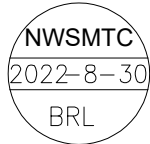
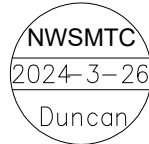
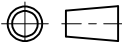


General Tolerances				
SELECT	✓			
TOL NO.	1	2	3	
.XXX	$\pm 0.10$	$\pm 0.15$	$\pm 0.20$	
.XX	$\pm 0.15$	$\pm 0.20$	$\pm 0.25$	
.X	$\pm 0.20$	$\pm 0.25$	$\pm 0.30$	
X.	$\pm 0.25$	$\pm 0.30$	$\pm 0.50$	
ANGLE	$\pm 3^\circ$			

- Technical Notes:
- (1) The material is NL6T UL94V-0
  - (2) Products meet RoHS environmental requirements.
  - (3) Insulation Resistance:  $>1000\text{M}\Omega$  Min
  - (4) Operating Temperature:  $-40^\circ\text{C} \sim +105^\circ\text{C}$
  - (5) Retention Force of  $\geq 0.1\text{Kg}$
  - (6) Resistance to Soldering and Hot Joints ( $260^\circ\text{C} \pm 5^\circ\text{C}/10$  seconds): the plastic core without blistering, melting, deformation and other phenomena;



NEWWAYSMART SMT CONSUMABLES  
Limitless Innovation & Maximize SMT Efficiency

Part Name				Design	Check	Approval			
PICKUP-HEADCAP									
Part Number									
NWSGH012-10X5.08X6.9X2.54PH1									
Material	NL6T	Property	STD		Drawing Style				
QTY	-	Scale	1:1		HEADER-CAP				
Unit	MM	Layout	A4H		Version	A0			
						Chat No.			
						1			