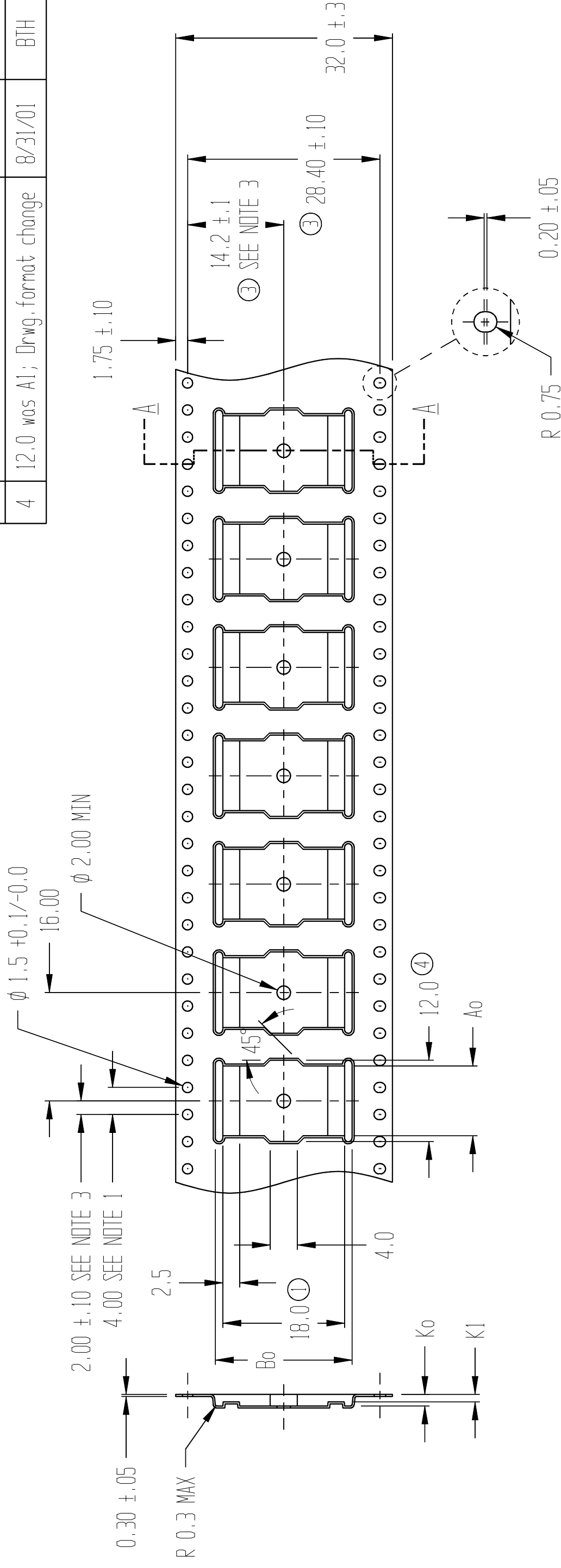


REVISIONS

REV	DESCRIPTION	DATE	APPROVED
1	18.0 was 18.45	2/16/94	BTH
2	Was a closed tool	7/1/94	T.S.
3	14.2 was 142 & 28.4 was 284	5/11/95	SDC
4	12.0 was A1; Drwg. format change	8/31/01	BTH

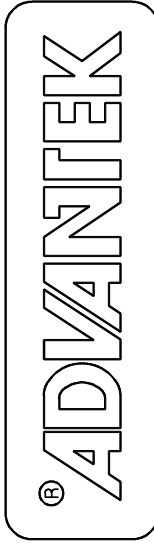


SECTION A - A

A0 = 10.30
 B0 = 20.20
 K0 = 1.70
 K1 = 1.10

NOTES:

1. 10 SPROCKET HOLE PITCH CUMULATIVE TOLERANCE ±0.2
2. CAMBER IN COMPLIANCE WITH EIA 481
3. POCKET POSITION RELATIVE TO SPROCKET HOLE MEASURED AS TRUE POSITION OF POCKET, NOT POCKET HOLE



TITLE ADVANTEK PART DRAWING NUMBER TSOP40-B
 TSOP40 CARRIER TAPE

TOLERANCES - UNLESS NOTED 1PL ±.2 2PL ±.10	MATERIAL PS+C
DRAWN BY CKS/BTH	ALL DIMENSIONS IN MILLIMETERS
DATE 7/13/92	DWG SIZE B
SCALE 3:2	SHEET 1 OF 1

REFERENCE NO.

DWG NO. A0713-92-1

REV 4