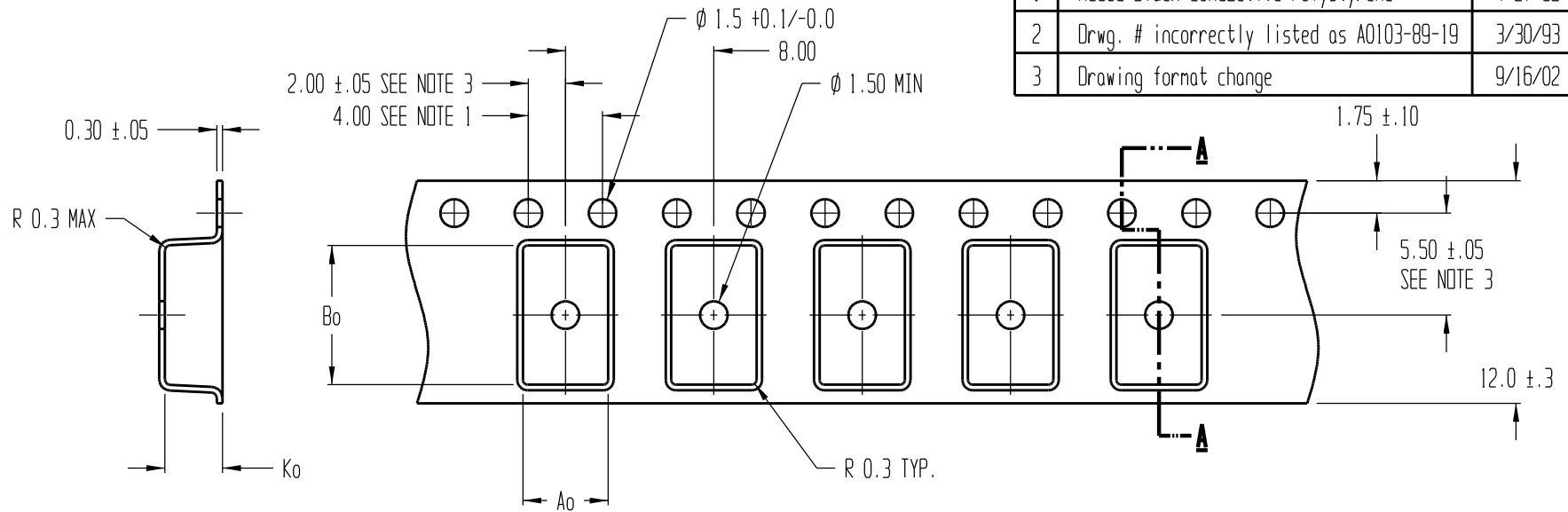


| REVISIONS | | | |
|-----------|---|---------|----------|
| REV | DESCRIPTION | DATE | APPROVED |
| 1 | Added Black Conductive Polystyrene | 4/27/92 | CKS |
| 2 | Drwg. # incorrectly listed as A0103-89-19 | 3/30/93 | T.S. |
| 3 | Drawing format change | 9/16/02 | BTH |



SECTION A - A

Ao = 4.60
Bo = 7.50
Ko = 3.10

- NOTES:
1. 10 SPROCKET HOLE PITCH CUMULATIVE TOLERANCE ± 0.2
 2. CAMBER IN COMPLIANCE WITH EIA 481
 3. POCKET POSITION RELATIVE TO SPROCKET HOLE MEASURED AS TRUE POSITION OF POCKET, NOT POCKET HOLE

| | | | |
|---|--------------------|-------------------------------|--------------|
| ADVANTEK | | | |
| TITLE ADVANTEK PART DRAWING NUMBER TANT.D-A CARRIER TAPE | | | |
| TOLERANCES - UNLESS NOTED 1PL ± 0.2 2PL ± 0.10 | | MATERIAL PS+C | |
| | | ALL DIMENSIONS IN MILLIMETERS | DWG SIZE B |
| DRAWN BY CKS/BTH | DATE 12/28/88 | SCALE 4:1 | SHEET 1 OF 1 |
| REFERENCE NO. | DWG NO. A0121-86-4 | REV 3 | |