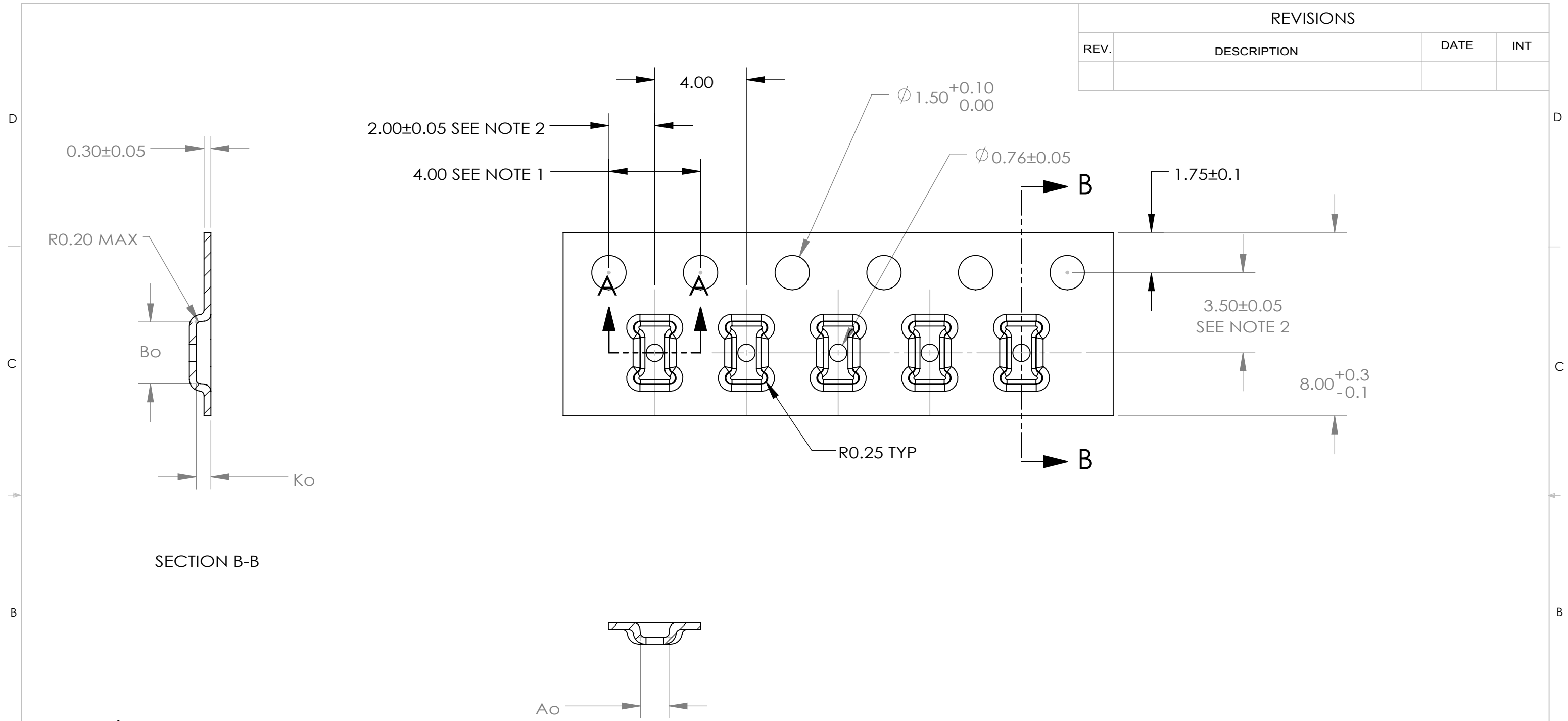
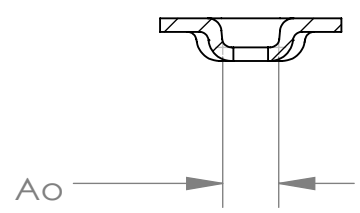


REVISIONS			
REV.	DESCRIPTION	DATE	INT



SECTION B-B



SECTION A-A

	DIM	±
Ao	1.23	0.05
Bo	2.70	0.05
Ko	0.64	0.08

- NOTES:
- 10 SPROCKET HOLE PITCH CUMULATIVE TOLERANCE ± 0.2
 - POCKET POSITION RELATIVE TO SPROCKET HOLE MEASURED AS TRUE POSITION OF POCKET, NOT POCKET HOLE.
 - Ao AND Bo ARE CALCULATED ON A PLANE AT A DISTANCE "R" ABOVE THE BOTTOM OF THE POCKET.

THE INFORMATION CONTAINED IN THIS DRAWING IS THE SOLE PROPERTY OF ADVANTEK INC. ANY REPRODUCTION IN PART OR WHOLE WITHOUT THE WRITTEN PERMISSION OF ADVANTEK INC. IS PROHIBITED.



TITLE: ADVANTEK PART DRAWING NUMBER ABA066-C CARRIER TAPE		MATERIAL PS+C	
TOLERANCES UNLESS - SPECIFIED 1 PL ± 0.2 2 PL ± 0.10		DRAWN BY: XHL	APPROVED BY: JH
CAD GENERATED DRAWING, DO NOT MANUALLY UPDATE DO NOT SCALE DRAWING		DATE 9/9/2015	SCALE 6:1 SHEET 1 OF 1 SIZE B
		PROJECT # 15244.01	DRAWING # T112647BT