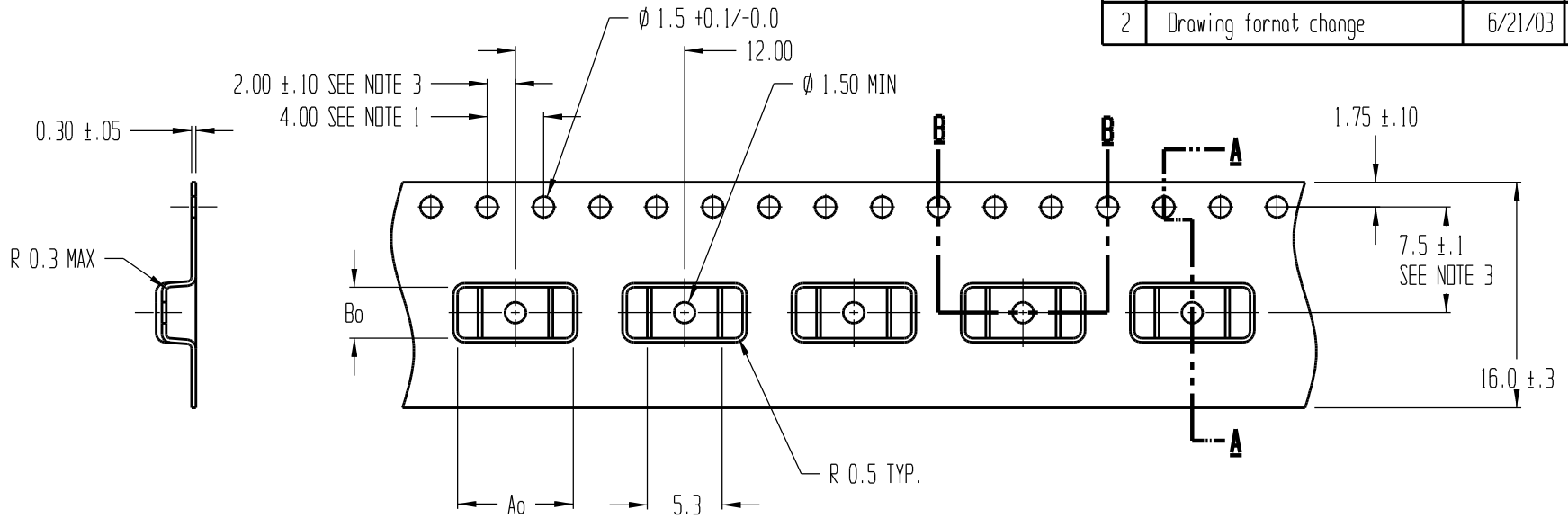
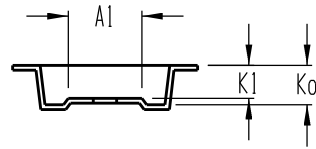


REVISIONS			
REV	DESCRIPTION	DATE	APPROVED
1	Was closed tool	6/10/96	SDC
2	Drawing format change	6/21/03	BVB



**SECTION A - A**



**SECTION B - B**

Ao = 8.20  
 A1 = 4.50  
 Bo = 3.60  
 Ko = 2.50  
 K1 = 2.10

- NOTES:
1. 10 SPROCKET HOLE PITCH CUMULATIVE TOLERANCE  $\pm 0.2$
  2. CAMBER IN COMPLIANCE WITH EIA 481
  3. POCKET POSITION RELATIVE TO SPROCKET HOLE MEASURED AS TRUE POSITION OF POCKET, NOT POCKET HOLE



TITLE ADVANTEK PART DRAWING NUMBER SSOP8P-A CARRIER TAPE			
TOLERANCES - UNLESS NOTED 1PL $\pm 0.2$ 2PL $\pm 0.10$	MATERIAL PS+C	ALL DIMENSIONS IN MILLIMETERS DWG SIZE B	
DRAWN BY RJB/BVB	DATE 12/5/95	SCALE 3:1	SHEET 1 OF 1
REFERENCE NO. T-5437-A	DWG NO. A1218-95-1	REV 2	