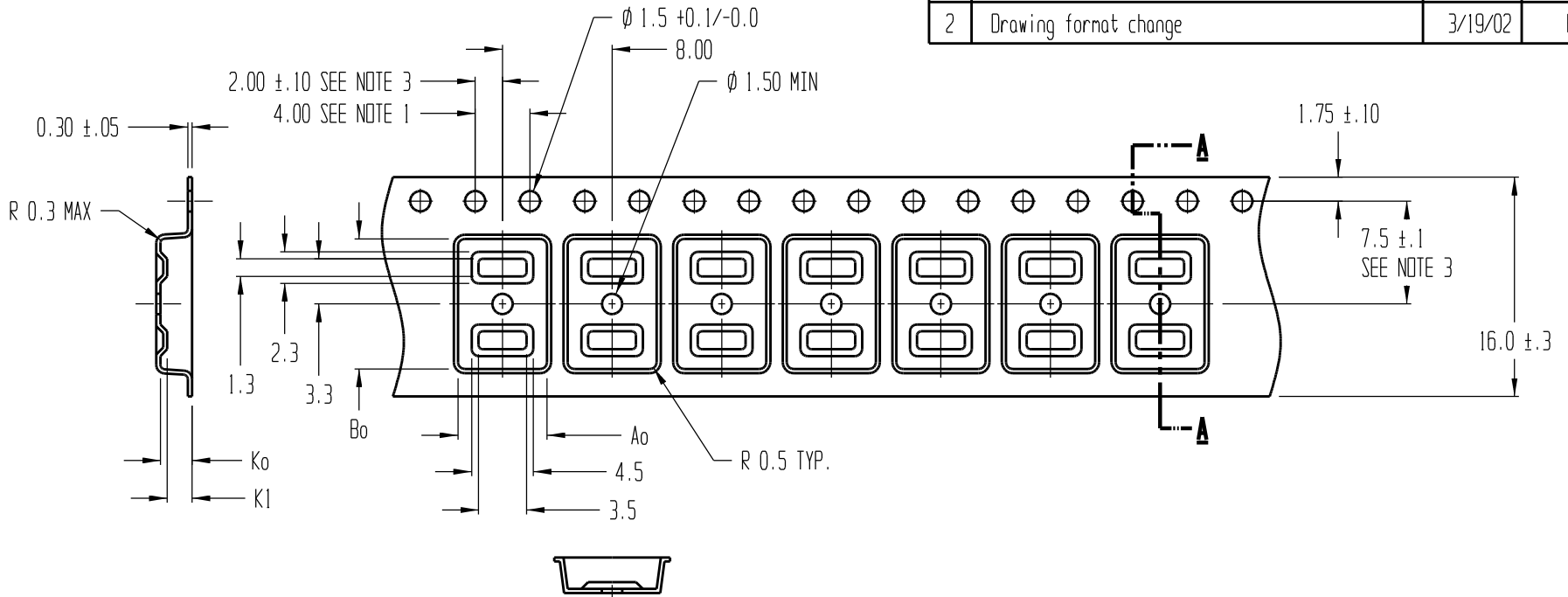


REVISIONS			
REV	DESCRIPTION	DATE	APPROVED
1	Changed to island style, Ko was 2.1, & was -A	10/19/94	S.C.
2	Drawing format change	3/19/02	BTH



SECTION A - A

$A_o = 6.50$
 $B_o = 9.50$
 $\text{Ⓢ} K_o = 2.30$
 $K_1 = 1.80$

- NOTES:
1. 10 SPROCKET HOLE PITCH CUMULATIVE TOLERANCE ± 0.2
 2. CAMBER IN COMPLIANCE WITH EIA 481
 3. POCKET POSITION RELATIVE TO SPROCKET HOLE MEASURED AS TRUE POSITION OF POCKET, NOT POCKET HOLE

ADVANTEK			
TITLE ADVANTEK PART DRAWING NUMBER SO-14P-B Ⓢ SOIC-14 CARRIER TAPE			
TOLERANCES - UNLESS NOTED 1PL ± 0.2 2PL ± 0.10		MATERIAL PS+C	
		ALL DIMENSIONS IN MILLIMETERS	DWG SIZE B
DRAWN BY T.S./BTH	DATE 9/6/94	SCALE 3:1	SHEET 1 OF 1
REFERENCE NO.		DWG NO. A0916-94-7	REV 2