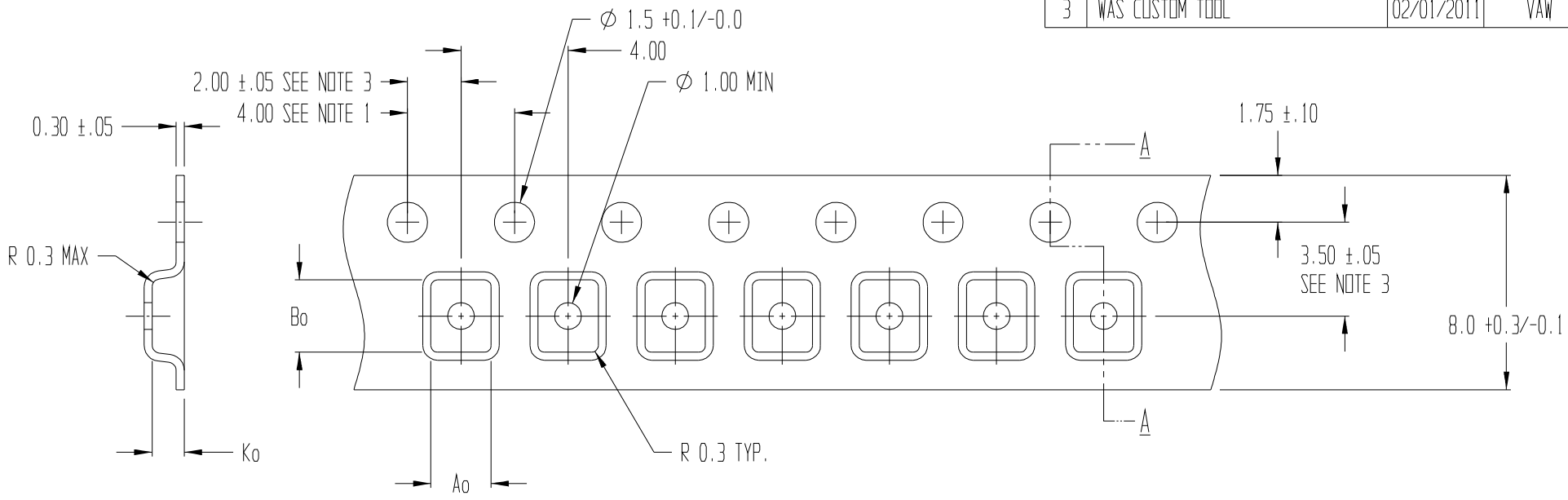


REVISIONS			
REV	DESCRIPTION	DATE	APPROVED
3	WAS CUSTOM TOOL	02/01/2011	VAW



SECTION A - A

$A_0 = 2.25$   
 $B_0 = 2.70$   
 $K_0 = 1.20$

- NOTES:
- 10 SPROCKET HOLE PITCH CUMULATIVE TOLERANCE  $\pm 0.2$
  - POCKET POSITION RELATIVE TO SPROCKET HOLE MEASURED AS TRUE POSITION OF POCKET, NOT POCKET HOLE
  - $A_0$  AND  $B_0$  ARE CALCULATED ON A PLANE AT A DISTANCE "R" ABOVE THE BOTTOM OF THE POCKET.



<b>ADVANTEK</b> engineered confidence™			
TITLE ADVANTEK PART DRAWING NUMBER SC70NS-B CARRIER TAPE			
TOLERANCES - UNLESS NOTED 1PL $\pm .2$ 2PL $\pm .10$		MATERIAL PS+C ALL DIMENSIONS IN MILLIMETERS DWG SIZE B	
DRAWN BY RJB/bth	DATE 1/22/99	SCALE 6:1	SHEET 1 OF 1
REFERENCE NO. T-6793 / 7471.00		DWG NO. T101954AT	REV 3