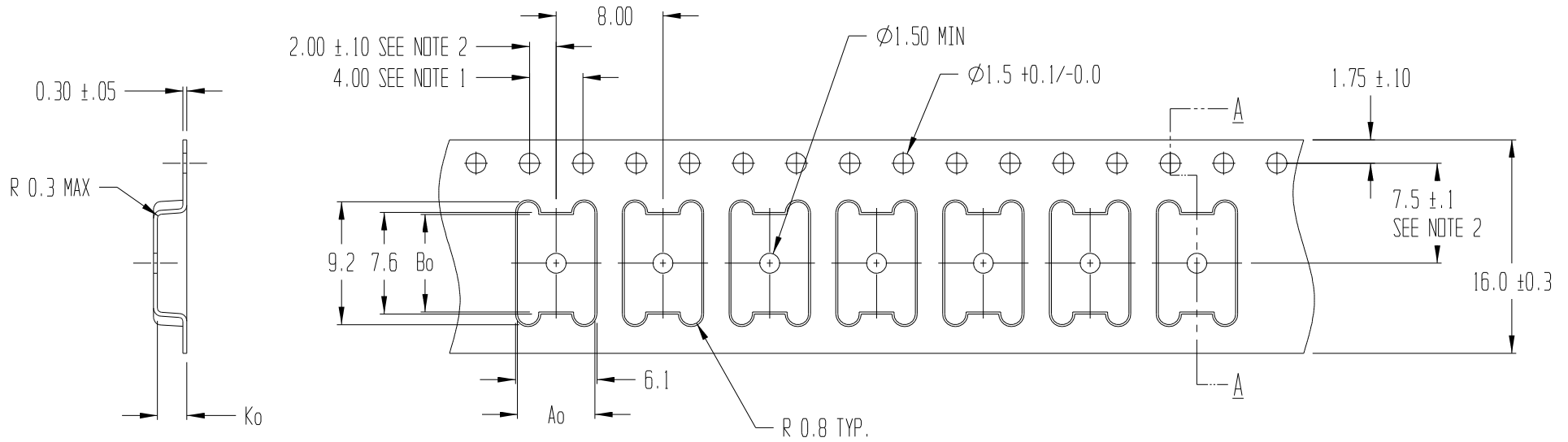


REVISIONS			
REV	DESCRIPTION	DATE	APPROVED
4	WAS CUSTOM TOOL	8/15/11	BTH
5	RESTORED ORIGINAL WIDTH TOLERANCE	3/27/12	BTH



SECTION A - A

Ao = 5.8  
Bo = 7.3  
Ko = 2.2

NOTES:

1. 10 SPROCKET HOLE PITCH CUMULATIVE TOLERANCE  $\pm 0.2$
2. POCKET POSITION RELATIVE TO SPROCKET HOLE MEASURED AS TRUE POSITION OF POCKET, NOT POCKET HOLE
3. Ao AND Bo ARE CALCULATED ON A PLANE AT A DISTANCE "R" ABOVE THE BOTTOM OF THE POCKET.



TITLE ADVANTEK PART DRAWING NUMBER SMP-28-B CARRIER TAPE			
TOLERANCES - UNLESS NOTED 1PL $\pm 0.2$ 2PL $\pm 0.10$	MATERIAL PS+C	DWG SIZE B	
ALL DIMS IN MILLIMETERS PER ASME Y14.5M			
DRAWN BY RJB/TMD	DATE 11/8/94	SCALE 3:1	SHEET 1 OF 1
CK'D BY	PROJECT NO. T-4342-A/ 7667.00	DWG NO. A1202-94-1	REV 5