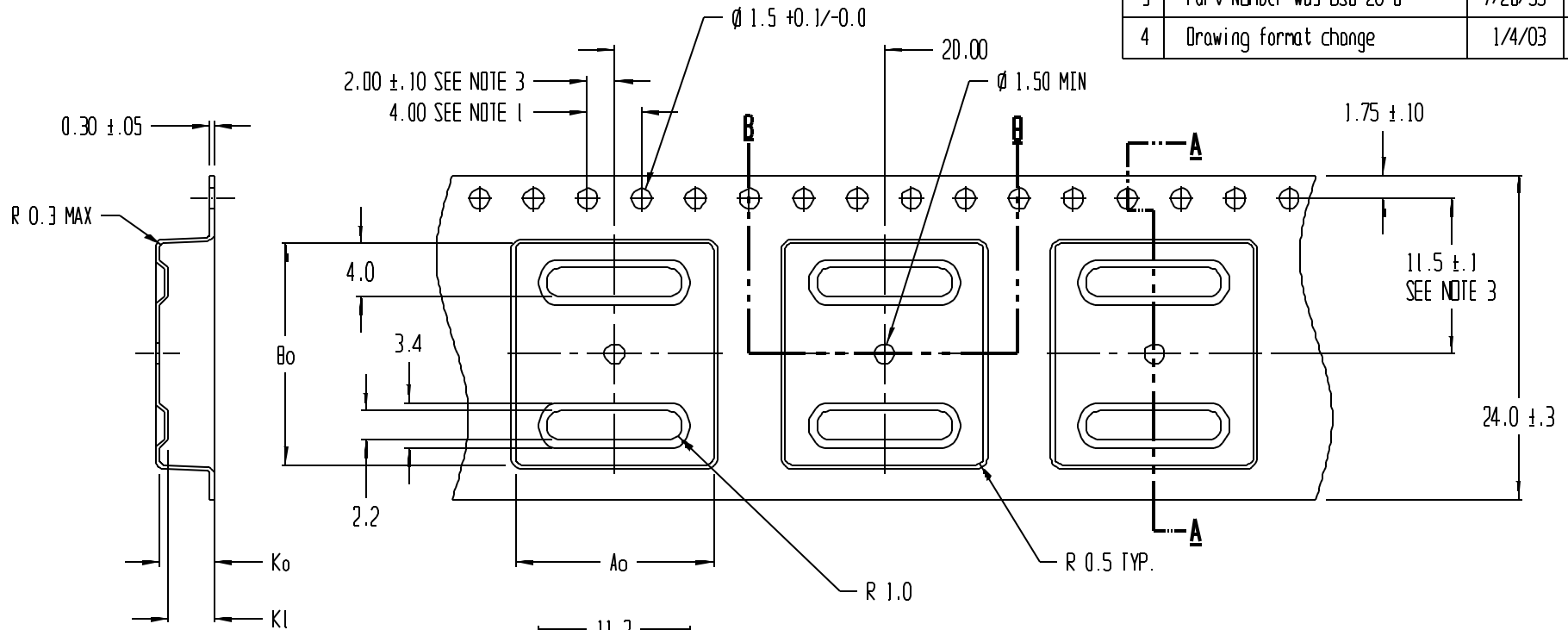
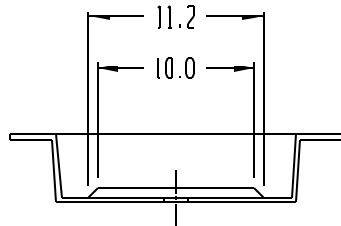


REVISIONS			
REV	DESCRIPTION	DATE	APPROVED
1	Revised Pedestals	1/12/95	T.S.
2	Revised Pedestals; Ko was 4.2	7/10/95	SDC
3	Part Number was DSO-20-B	7/26/95	SDC
4	Drawing format change	1/4/03	BVB



SECTION A - A



SECTION B - B

$Ao = 14.70$
 $Bo = 16.40$
 $Ko = 4.00$ ②
 $Kl = 3.40$

NOTES:

1. 10 SPROCKET HOLE PITCH CUMULATIVE TOLERANCE ± 0.2
2. CAMBER IN COMPLIANCE WITH EIA 481
3. POCKET POSITION RELATIVE TO SPROCKET HOLE MEASURED AS TRUE POSITION OF POCKET, NOT POCKET HOLE



ADVANTEK			
TITLE ADVANTEK PART DRAWING NUMBER DSO-20-C ③ CARRIER TAPE			
TOLERANCES - UNLESS NOTED 1PL ± 0.2 2PL ± 0.10		MATERIAL PS+C ALL DIMENSIONS IN MILLIMETERS DWG SIZE B	
DRAWN BY SDC/BVB	DATE 7/10/95	SCALE 3:1	SHEET 1 OF 1
REFERENCE NO. T-4508-A		DWG NO. A0217-95-2	REV 4