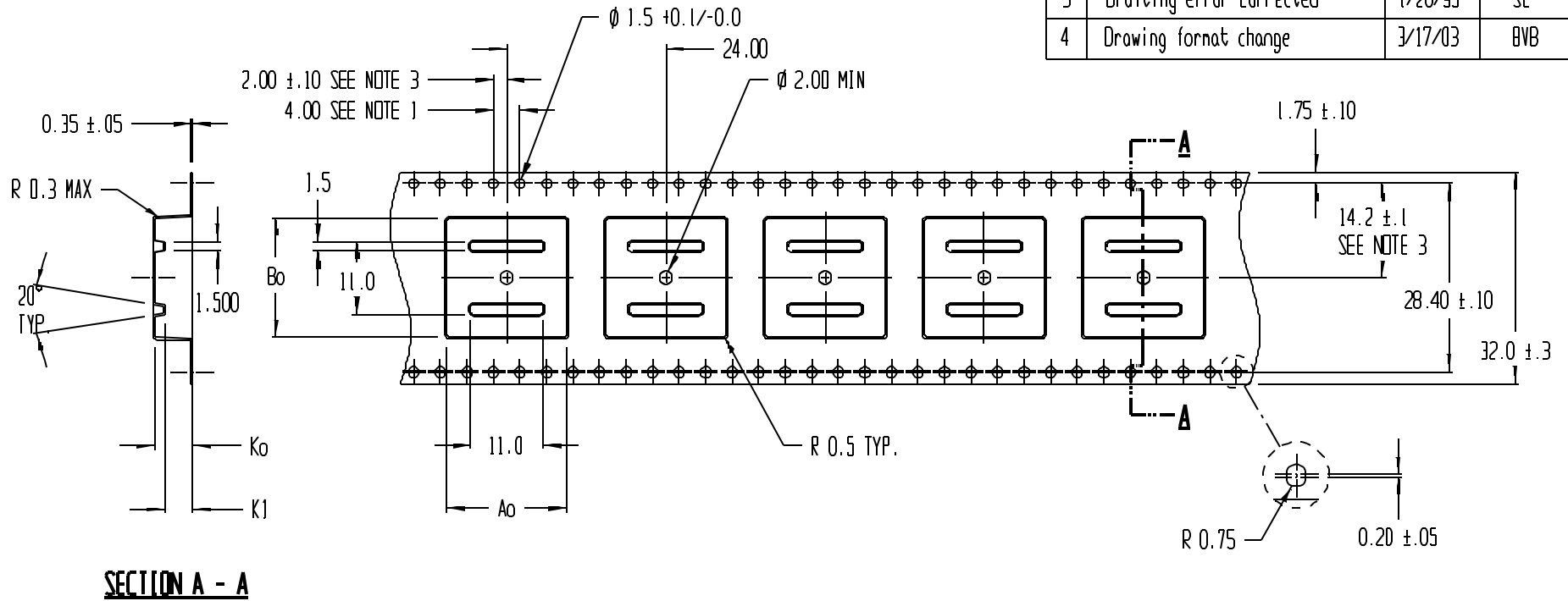


REVISIONS			
REV	DESCRIPTION	DATE	APPROVED
1	New Design	3/5/92	[KS
2	P/N was PLC44F-A	3/12/92	[KS
3	Drafting error corrected	1/20/95	SC
4	Drawing format change	3/17/03	BVB



Ao = 18.00  
 Bo = 18.00  
 Ko = 5.70  
 K1 = 4.20

- NOTES:
1. 10 SPROCKET HOLE PITCH CUMULATIVE TOLERANCE ±0.2
  2. CAMBER IN COMPLIANCE WITH EIA 481
  3. POCKET POSITION RELATIVE TO SPROCKET HOLE MEASURED AS TRUE POSITION OF POCKET, NOT POCKET HOLE

<b>ADVANTEK</b>			
TITLE ADVANTEK PART DRAWING NUMBER PLC44F-D (2) CARRIER TAPE			
TOLERANCES - UNLESS NOTED 1PL ±.2 2PL ±.10	MATERIAL PS+C		DWG SIZE B
ALL DIMENSIONS IN MILLIMETERS	DATE 11/15/91	SCALE 3:2	SHEET 1 OF 1
DRAWN BY [KS/BVB]	REFERENCE NO.	DWG NO. A1115-91-1	REV 4