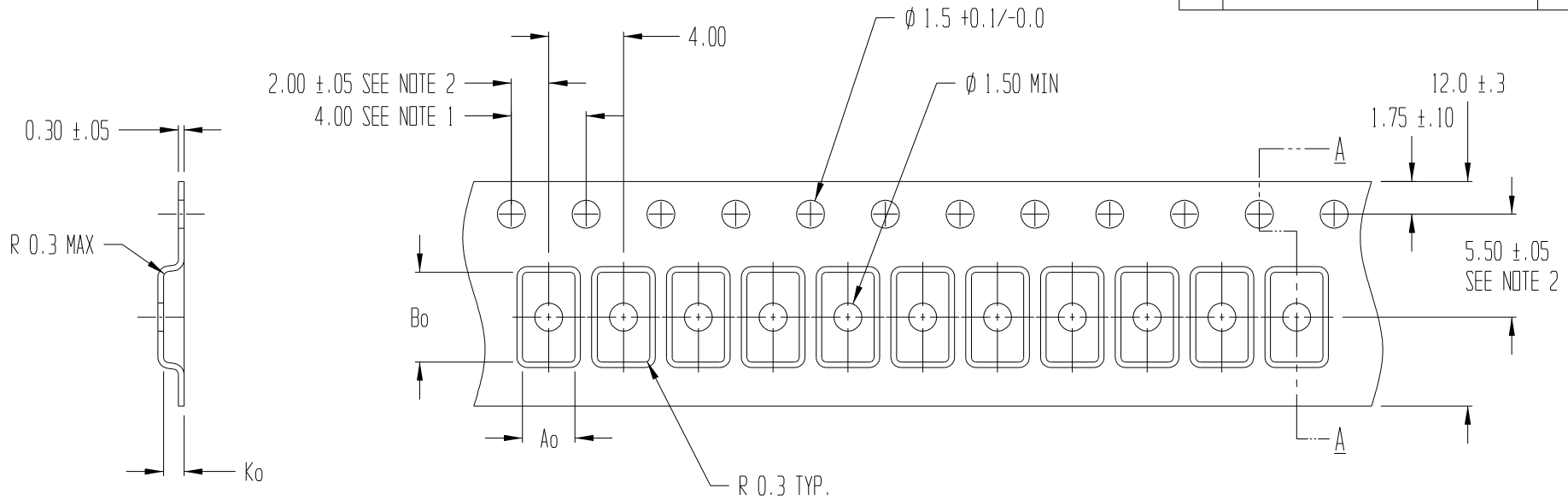


REVISIONS			
REV	DESCRIPTION	DATE	APPROVED
1	WAS A CUSTOM TOOL	8/24/11	TMO



SECTION A - A

$A_o = 2.80$
 $B_o = 4.80$
 $K_o = 1.10$

NOTES:

- 10 SPROCKET HOLE PITCH CUMULATIVE TOLERANCE ± 0.2
- POCKET POSITION RELATIVE TO SPROCKET HOLE MEASURED AS TRUE POSITION OF POCKET, NOT POCKET HOLE
- A_o AND B_o ARE CALCULATED ON A PLANE AT A DISTANCE "R" ABOVE THE BOTTOM OF THE POCKET.



ADVANTEK[®]
 engineered confidence™

TITLE ADVANTEK PART DRAWING NUMBER PBFN20-A CARRIER TAPE			
TOLERANCES - UNLESS NOTED 1PL ± 0.2 2PL ± 0.10	MATERIAL PS+C	DWG SIZE B	
ALL DIMS IN MILLIMETERS PER ASME Y14.5M			
DRAWN BY BTH	DATE 04/17/2002	SCALE 4:1	SHEET 1 OF 1
CK'D BY	PROJECT NO. T-11668 / 7667.00	DWG NO. T103613BT	REV 1